

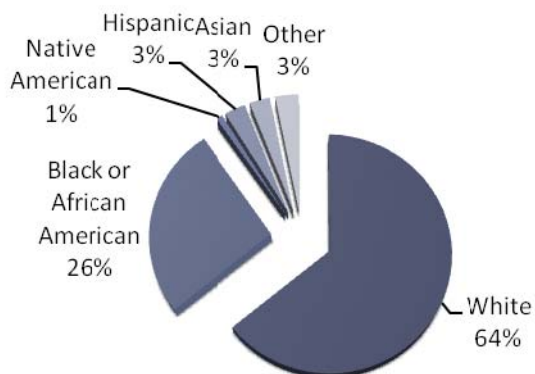
# Unmet Needs Among SOUTHERN Maryland CYSHCN and their Families

## 2010 MARYLAND PARENT SURVEY

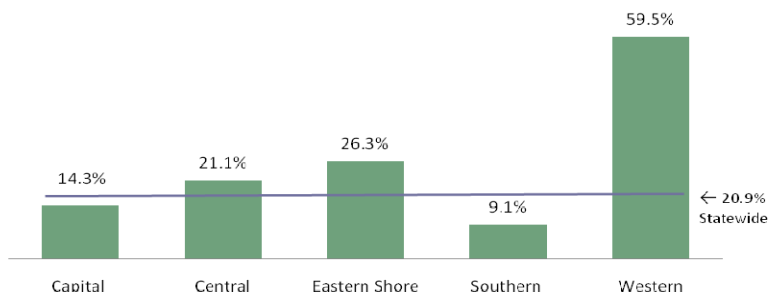
### Statewide Characteristics of Responding Families and their CYSHCN<sup>i</sup>

772 families with at least one CYSHCN (representing 1040 children) responded to the survey statewide.

Race/ethnicity of responding families' children (n= 1,040 children)



Percent of Families with at Least One CYSHCN at or Below 185 FPL

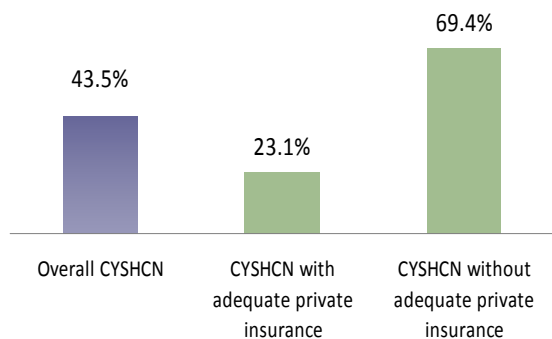


### Impact on the Family

	% of Southern MD CYSHCN	% of CYSHCN Statewide
<i>CYSHCN whose families pay \$1,000 or more out of pocket in medical expenses per year</i>	<b>43.5</b>	<b>42.5</b>
<i>CYSHCN whose families report that their child's insurance does not pay for all health services needed</i>	<b>75.0</b>	<b>54.5</b>
<i>CYSHCN who were uninsured at some point in the last 12 months</i>	<b>13.2</b>	<b>12.7</b>
<i>CYSHCN whose conditions cause family members to cut back or stop working</i>	<b>44.9</b>	<b>37.7</b>

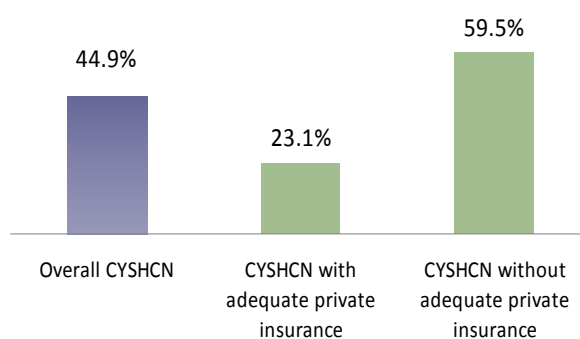
#### Impact on the Family:

CYSHCN whose families pay \$1,000 or more out of pocket in medical expenses per year



#### Impact on the Family:

CYSHCN whose conditions cause family to cut back or stop working

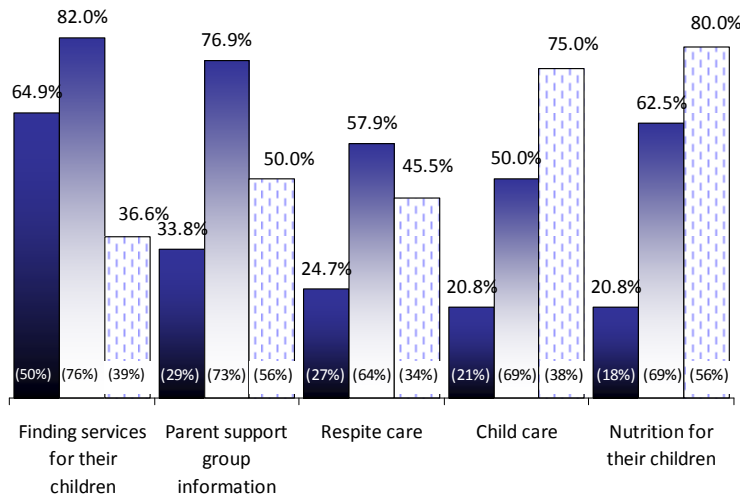


# Unmet Needs Among SOUTHERN Maryland CYSHCN and their Families

## 2010 MARYLAND PARENT SURVEY

### Need for Family Support

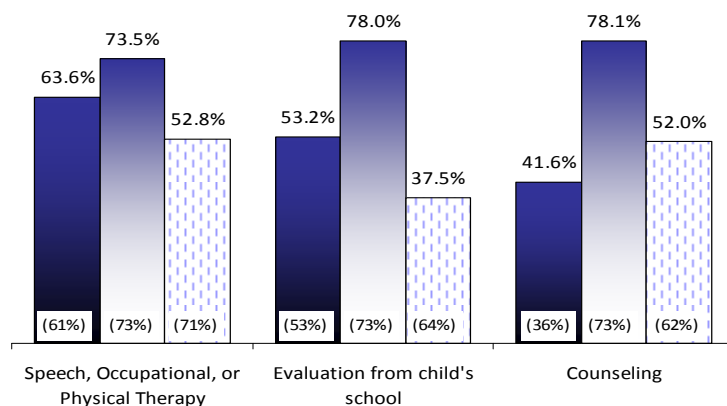
Families who reported needing support services for CYSHCN in Southern Maryland (% statewide in parenthesis)



■ % families of CYSHCN who needed assistance with issue  
 ■ % families of CYSHCN who needed and sought assistance with issue  
 □ % families of CYSHCN who sought assistance and were satisfied with services received

### Need for Education and Related Services

Families who reported needing specific services for CYSHCN in Southern Maryland (% statewide in parenthesis)



■ % families of CYSHCN who needed assistance with issue  
 ■ % families of CYSHCN who needed and sought assistance with issue  
 □ % families of CYSHCN who sought assistance and were satisfied with services received

### Need for Health Care

Percent of Families of CYSHCN reporting any unmet need or delayed medical care in Southern Maryland

Type of Care	% Southern Maryland	% Maryland
Any type of unmet need or delayed care	44.2	39.2
Dental	36.4	27.4
Mental Health Care	34.6	25.3
Counseling	29.2	23.6
Medical Care	27.8	21.0

Southern Maryland families of CYSHCN report high rates of unmet need or delayed care for needed health care services. Over 44% indicated that their family experienced some type of unmet or delayed care. The highest rates of unmet or delayed care were for dental care (36.4%) and mental health care (34.6%). High rates of delayed care or unmet needs were also reported for counseling (29.2%) and medical care (27.8%). All rates of delayed care or unmet needs reported by Southern Maryland families were significantly higher than statewide rates.

### Southern Maryland

The Southern Maryland region includes Charles, Calvert, and St. Mary's counties.

